

Layton Grande At TerraWalk at Babcock Ranch

12532 Quartz Drive, Babcock Ranch, Florida, 33920

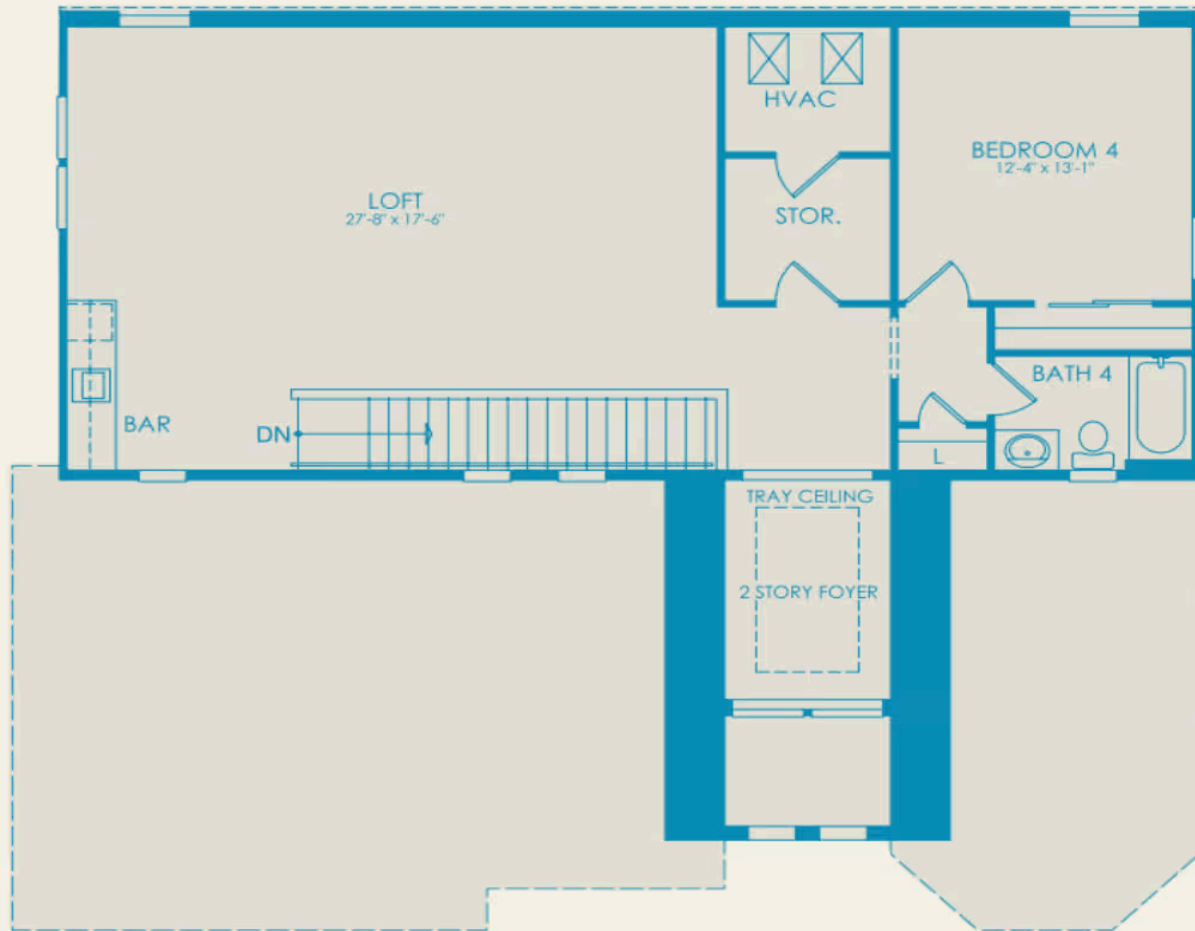
- \$849,990 Starting From
- \$5,491/mo Starting From
- 4-5 Bedrooms
- 4 Bathrooms
- 3970 Sq. Ft.

4 br / 4.5 ba - First Floor



To view all option configurations for this home design, see the interactive floor plan.

4 br / 4.5 ba - Second Floor



To view all option configurations for this home design, see the interactive floor plan.

Community Association and golf fees may be required. Prices, promotions, incentives, features, options, amenities, floor plans, elevations, designs, materials, and dimensions are subject to change without notice. Square footage and dimensions are estimated and may vary in actual construction. Community improvements and recreational features and amenities described are based upon current development plans which are subject to change and which are under no obligation to be completed. Actual position of house on lot will be determined by the site plan and plot plan. Floor plans, interiors and elevations are artist's conception or model renderings and are not intended to show specific detailing. Floor plans are the property of PulteGroup, Inc. and its affiliates and are protected by U.S. copyright laws. For further information, see our terms of use. This is not an offering to residents of NY, NJ, CA or CT or where otherwise prohibited by law. Pulte Home Corporation is a licensed California real estate broker (Lic. # 00876003).



Layton Grande At TerraWalk at Babcock Ranch

12532 Quartz Drive, Babcock Ranch, Florida, 33920

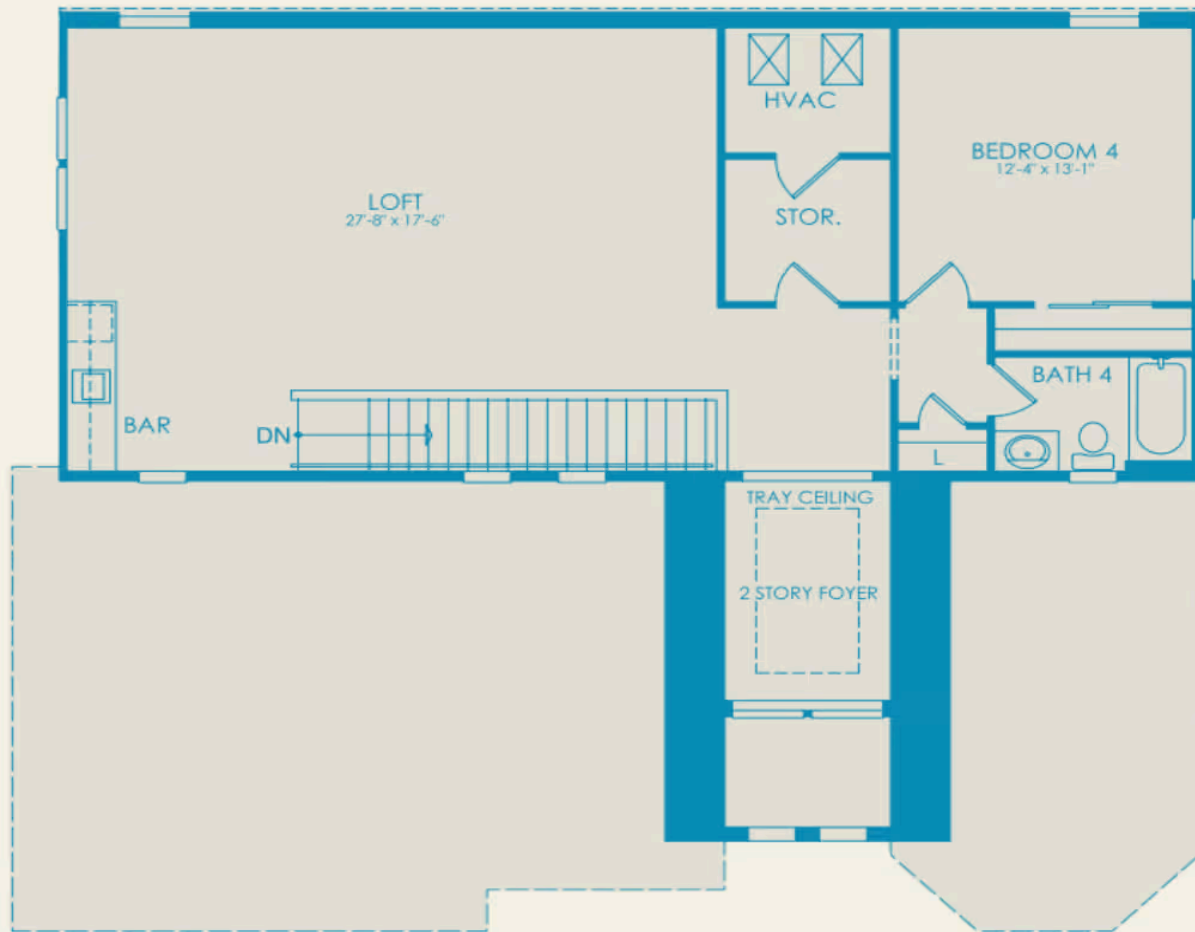
- \$849,990 Starting From
- \$5,491/mo Starting From
- 4-5 Bedrooms
- 4 Bathrooms
- 3970 Sq. Ft.

5 br / 4.5 ba - First Floor



To view all option configurations for this home design, see the interactive floor plan.

5 br / 4.5 ba - Second Floor



To view all option configurations for this home design, see the interactive floor plan.

Community Association and golf fees may be required. Prices, promotions, incentives, features, options, amenities, floor plans, elevations, designs, materials, and dimensions are subject to change without notice. Square footage and dimensions are estimated and may vary in actual construction. Community improvements and recreational features and amenities described are based upon current development plans which are subject to change and which are under no obligation to be completed. Actual position of house on lot will be determined by the site plan and plot plan. Floor plans, interiors and elevations are artist's conception or model renderings and are not intended to show specific detailing. Floor plans are the property of PulteGroup, Inc. and its affiliates and are protected by U.S. copyright laws. For further information, see our terms of use. This is not an offering to residents of NY, NJ, CA or CT or where otherwise prohibited by law. Pulte Home Corporation is a licensed California real estate broker (Lic. # 00876003).

