



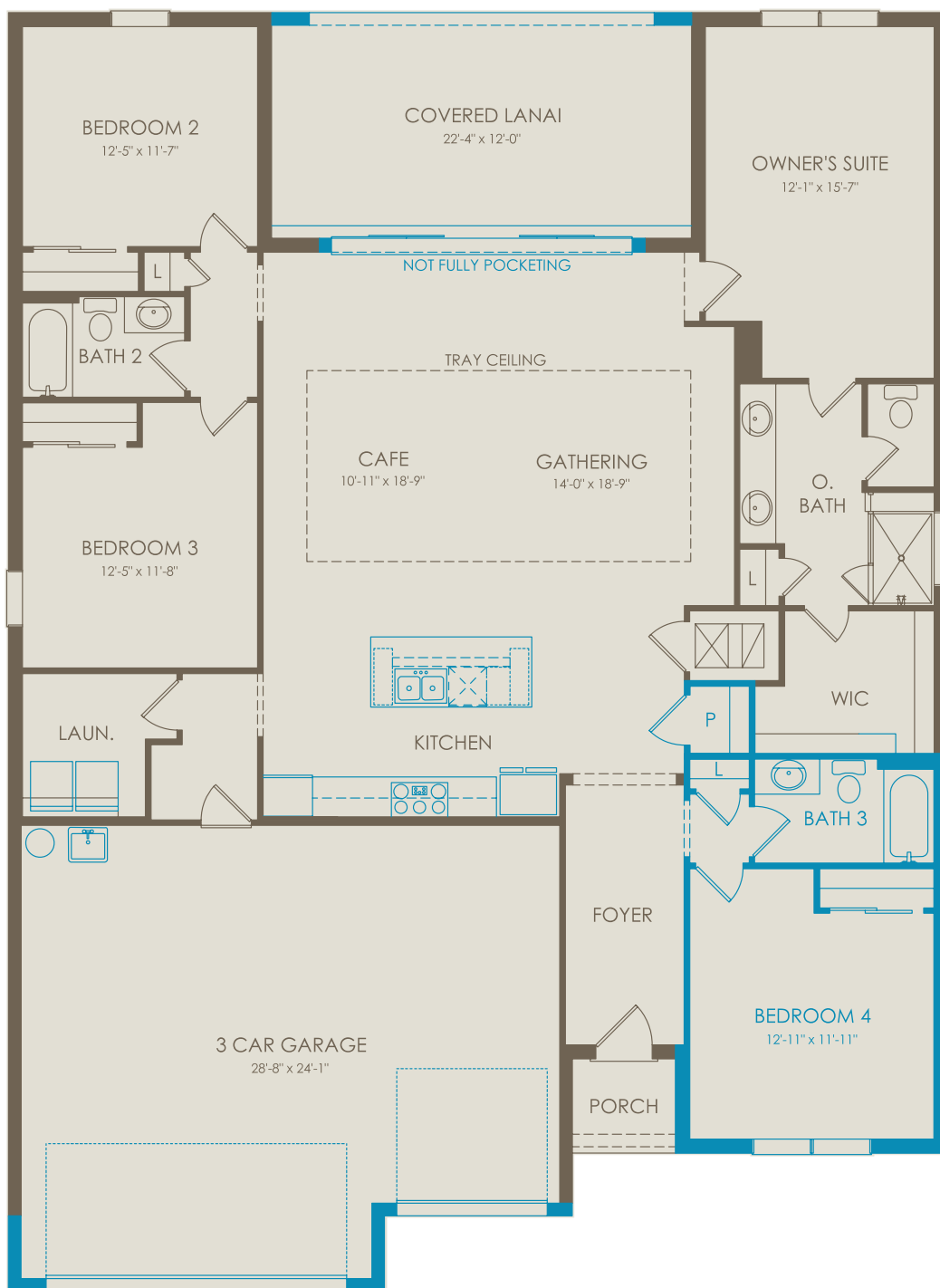
VERDE AT BABCOCK RANCH

44252 Kelly Drive, Corner of Curry Creek Trl & Cypress Pkwy, Babcock Ranch, 05433982
941-283-7494

Astoria Floor Plan

3 Bedrooms • 2.5 Bathrooms • 3 Car Garage • 2,223 SqFt

Floor 1



Selected Options: 4' Garage Extension, Bedroom 4 & Bath 3, Pocket Sliding Glass Door at Gathering, Kitchen Layout 4, Move-In Ready Package

For this application, the company does not warrant or assume any legal liability or responsibility for the accuracy, completeness, or usefulness of any information, apparatus, product, or process disclosed. Base floor plan subject to change based on elevation selected.