



# VERDE AT BABCOCK RANCH

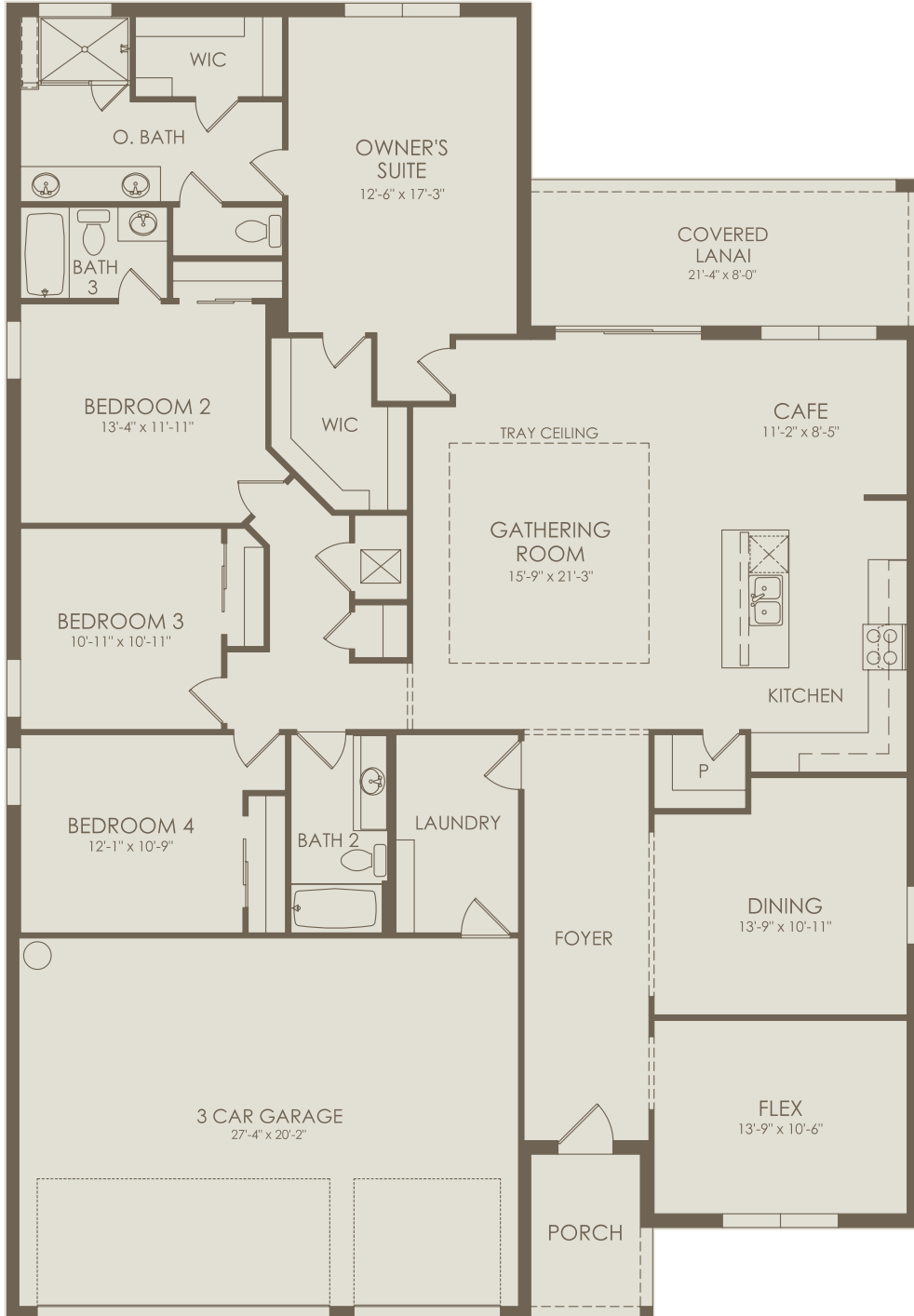
44252 Kelly Drive, Corner of Curry Creek Trl & Cypress Pkwy, Babcock Ranch, 05433982

941-283-7494

## Bloomfield Floor Plan

4 Bedrooms • 3 Bathrooms • 3 Car Garage • 2,503 SqFt

### Floor 1



Options not selected include : 4' Garage Extension, Covered Lanai Extension, Enclosed Flex/Den, Kitchen Layout 4, Move-In Ready Package

For this application, the company does not warrant or assume any legal liability or responsibility for the accuracy, completeness, or usefulness of any information, apparatus, product, or process disclosed. Base floor plan subject to change based on elevation selected.